



## Metal & Glass Finishes

Our hand applied finishes are the best in the industry because we take the time to let them "mature". Our unique verdigris patina is the result of an intensive three day process resulting in a complex and naturally aged appearance. All of our hand applied metal finishes will continue to mature and change with time.

### Metal Finishes



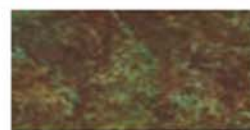
RC - Raw Copper



MB - Mission Brown



BZ - Bronze



VP-Verdigris Patina



RB - Rustic Brown



AB - Antique Brass



AC - Antique Copper



P - Pewter



S - Slate



BK - Satin Black

### Glass Options



GW - Gold White Iridescent



WO - White Opalescent



F - Frosted



CS - Clear Seedy



RM - Rain Mist



OF - Off White



CR - Cream



TN - Tan



AM - Almond Mica



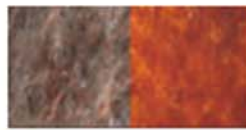
M - Amber Mica



GWC - Gold White Iridescent and White Opalescent combination



BC - Blue and White Opalescent combination



MC - Amber / Almond Mica combination



REC - Red and White Opalescent combination

offered in  
Etoile, Glasgow, Kennebec,  
Saint Clair, State Street, Yorktown

offered in  
Glasgow, Saint Clair,  
State Street

offered in  
Asheville

offered in  
Glasgow, Saint Clair, State Street